



AUSTRALIAN TECHNOLOGY MANAGEMENT  
ATM Industry Solutions



# PINGuard™



**AUSTRALIAN TECHNOLOGY MANAGEMENT**

P.O Box 888 Marrickville 1475  
Sydney NSW AUSTRALIA  
[www.atmgroup.net.au](http://www.atmgroup.net.au)

**Phone:** +61 2 9569 7007  
**Fax:** +61 2 8569 0162  
[info@atmgroup.net.au](mailto:info@atmgroup.net.au)



## IN THE BOX

- EVO3i PINGuard
- Fitting Template
- Surface cleaning sachets
- Surface Primer
- Fitting key
- Instruction manual

# EVO3i



## DESCRIPTION

The EVO3i was launched due to increasing criminal attacks using pinhole/spy cameras fitted to ATM fascias and surroundings which record the user entering their PIN. The unique patented polarising lens was developed specifically for the EVO3i. Instead of blurring the image, the Lens polarises the image by actually blocking the light particles from reaching a device fitted onto the ATM fascia, while allowing the user to view the PIN pad clearly. The EVO3i is interchangeable with the EVO3, allowing for upgrading or tailoring of security requirements.

## FEATURES

- Ergonomically designed to help disabled users
- Polarised lens (protects against pinhole camera attacks)
- Retro fitted in minutes
- Fits almost any ATM cash machine
- Made from highly durable fire retardant shatterproof polycarbonate
- No drilling or physical fixings required
- All components replaceable

## SPECIFICATIONS

Unit size and weight	Width 257mm (10.11in) Height 81mm (3.2in) Depth 152mm (4.69in) Weight 330g (0.7lb)
Unit Packaging size and weight	Width 263mm (10.35in) Length 220mm (8.66in) Height 85mm (3.35in) Weight 0.8kg (1.8lb)
Carton Size and weight (10 off)	Width 450mm (17.72in) Length 273mm (10.75in) Height 425mm (16.73in) Weight 8kg (17.64lb)

## LANGUAGES

Czech, Danish, Dutch, English, Finnish, French, German, Greek, Hungarian, Italian, Japanese, Korean, Maltese, Norwegian, Polish, Portuguese, Russian, Simplified Chinese, Spanish, Swedish, Traditional Chinese and Turkish.

## ACCESSORIES

- Replacement upper plates
- Replacement lower set of plates
- Replacement PINGuard body
- Replacement security screws
- Angle reducing spacers
- Cut out for headphone jack
- Curved spacers for Opteva machines
- Side labels printed to customer's requirements
- Optional extra high security screws
- Optional Anti glare lens

## AUSTRALIAN TECHNOLOGY MANAGEMENT

P.O Box 888 Marrickville 1475 Sydney NSW AUSTRALIA  
 Phone: +61 2 9569 7007  
 Fax: +61 2 8569 0162  
 www.atmgroup.net.au info@atmgroup.net.au



## IN THE BOX

- EVO3 Compact PINGuard/EVO3i Compact PINGuard
- Fitting Template
- Surface cleaning sachets
- Surface Primer
- Fitting key
- Instruction manual

# EVO 3i

## COMPACT



## DESCRIPTION

The option to upgrade the EVO3 Compact to the EVO3i Compact Anti Camera version is very simple. The unique polarising lens (as used on the EVO3i) simply fits onto the PINGuard body and can be lifted back to increase access to the PIN pad for users with limited dexterity.

## FEATURES

- Designed to fit any type of NCR ATM
- Ergonomically designed to help disabled users
- Polarising lens (protects against pinhole camera attacks) retro fitted in minutes
- Made from highly flexible, durable elastic polymer
- No drilling or physical fixings required
- All components replaceable
- Optional anti glare lens

## SPECIFICATIONS

Unit size and weight	Width 257mm (10.11in) Height 81mm (3.2in) Depth 121mm (4.69in) Weight 320g (0.71lb)
Unit Packaging size and weight	Width 263mm (10.35in) Length 220mm (8.66in) Height 85mm (3.35in) Weight 0.8kg (1.8lb)
Carton Size and weight (10 off)	Width 450mm (17.72in) Length 273mm (10.75in) Height 425mm (16.73in) Weight 8kg (17.64lb)

## LANGUAGES

Czech, Danish, Dutch, English, Finnish, French, German, Greek, Hungarian, Italian, Japanese, Korean, Maltese, Norwegian, Polish, Portuguese, Russian, Simplified Chinese, Spanish, Swedish, Traditional Chinese and Turkish.

## ACCESSORIES

- Replacement security screws and key
- Replacement lower set of plates
- Replacement EVO3i Compact body
- Cut out for headphone jack
- Optional anti glare lens
- Optional extra high security screws

## AUSTRALIAN TECHNOLOGY MANAGEMENT

P.O Box 888 Marrickville 1475  
Sydney NSW AUSTRALIA

[www.atmgroup.net.au](http://www.atmgroup.net.au)

Phone: +61 2 9569 7007

Fax: +61 2 8569 0162

[info@atmgroup.net.au](mailto:info@atmgroup.net.au)

## IN THE BOX

- EVO3 Compact PINGuard/EVO3i Compact PINGuard
- Fitting Template
- Surface cleaning sachets
- Surface Primer
- Fitting key
- Instruction manual



# EVO3 COMPACT



## DESCRIPTION

The EVO3 Compact is specific to the smaller NCR PIN pads. Due to some ATM designs, the space and usability can be limited. The size of the EVO3 Compact has been optimised while still allowing usability of the PIN pad. Accessibility has been maintained by using elastic polymer for the body which gives it amazing flexibility by allowing for the compact design, security and accessibility. The EVO3 Compact, like the entire range of PINGuards, is replaceable. The option to upgrade to the EVO3i Compact Anti Camera version is very simple. The unique polarising lens (as used on the EVO3i) simply fits onto the PINGuard body and can be lifted back to increase access to the PIN pad for users with limited dexterity.

## FEATURES

- Designed to fit any type of NCR ATM
- Ergonomically designed to help disabled users
- Optional polarising lens (protects against pinhole camera attacks) retro fitted in minutes
- Made from highly flexible durable polymer
- No drilling or physical fixings required
- All components replaceable

## SPECIFICATIONS

Unit size and weight	Width 257mm (10.11in) Height 81mm (3.2in) Depth 121mm (4.69in) Weight 320g (0.71lb)
Unit Packaging size and weight	Width 263mm (10.35in) Length 220mm (8.66in) Height 85mm (3.35in) Weight 0.8kg (1.8lb)
Carton Size and weight (10 off)	Width 450mm (17.72in) Length 273mm (10.75in) Height 425mm (16.73in) Weight 8kg (17.64lb)

## LANGUAGES

Czech, Danish, Dutch, English, Finnish, French, German, Greek, Hungarian, Italian, Japanese, Korean, Maltese, Norwegian, Polish, Portuguese, Russian, Simplified Chinese, Spanish, Swedish, Traditional Chinese and Turkish.

## ACCESSORIES

- Replacement security screws and key
- Replacement lower set of plates
- Replacement EVO3i Compact body
- Cut out for headphone jack

## AUSTRALIAN TECHNOLOGY MANAGEMENT

P.O Box 888 Marrickville 1475 Sydney NSW AUSTRALIA  
 Phone: +61 2 9569 7007  
 Fax: +61 2 8569 0162  
 www.atmgroup.net.au  
 info@atmgroup.net.au

## IN THE BOX

- EVO3 PINGuard
- Fitting Template
- Surface cleaning sachets
- Surface Primer
- Fitting key
- Instruction manual

# EVO3



## DESCRIPTION

The EVO3 is one of the most Versatile PINGuards in the range. It has been design to blend security with accessibility as well as look like an integrated part of the cash machine. The EVO3 uses a complex polarising lens that covers part of the PIN Pad. This lens allows only the ATM user to view the PIN pad clearly but blurs the view of the PIN pad when viewed at an angle. The semi opaque sides obscure the view but allow enough visibility to stop devices being fitted on the inside of the PINGuard. As with all PINGuards, it can be fitted in minutes. No alterations need to be made to the ATM; no drilling or physical fixing is required.

## FEATURES

- Ergonomically designed to help disabled users
- Polarised lens (combats shoulder surfing)
- Retro fitted in minutes
- Fits almost any ATM cash machine
- Made from highly durable fire retardant shatterproof polycarbonate
- No drilling or physical fixings required
- All components replaceable
- Fitted with high security screws with optional extra high security screw fixings

## SPECIFICATIONS

Unit size and weight	Width 257mm (10.11in) Height 81mm (3.2in) Depth 121mm (4.69in) Weight 500g (1.1lb)
Unit Packaging size and weight	Width 263mm (10.35in) Length 220mm (8.66in) Height 85mm (3.35in) Weight 0.8kg (1.8lb)
Carton Size and weight (10 off)	Width 450mm (17.72in) Length 273mm (10.75in) Height 425mm (16.73in) Weight 8kg (17.64lb)

## LANGUAGES

Czech, Danish, Dutch, English, Finnish, French, German, Greek, Hungarian, Italian, Japanese, Korean, Maltese, Norwegian, Polish, Portuguese, Russian, Simplified Chinese, Spanish, Swedish, Traditional Chinese and Turkish.

## ACCESSORIES

- Replacement upper plates
- Replacement lower set of plates
- Replacement EVO3 body
- Replacement security screws
- Angle reducing spacers
- Cut out for headphone jack
- Curved spacers for Opteva machines
- Side labels printed to customer's requirements
- Optional extra high security screws

## AUSTRALIAN TECHNOLOGY MANAGEMENT

P.O Box 888 Marrickville 1475 Sydney NSW AUSTRALIA  
 Phone: +61 2 9569 7007  
 Fax: +61 2 8569 0162  
 www.atmgroup.net.au  
 info@atmgroup.net.au



## IN THE BOX

- EVO5 PINGuard
- Fitting Template
- Surface cleaning sachets
- Surface Primer
- Fitting key
- Instruction manual

# EVO5



## DESCRIPTION

The EVO5 is a variant of the EVO3 but has been designed to meet the strict ZKA security regulations. It uses the same complex polarising lens as the EVO3 which also covers part of the PIN Pad. This lens allows only the ATM user to view the PIN pad clearly but blurs the view of the PIN pad when viewed at an angle. The semi opaque sides obscure the view but allow enough visibility to stop devices being fitted on the inside of the PINGuard. Installation takes minutes. No alterations need to be made to the ATM; no drilling or physical fixing is required.

## FEATURES

- Ergonomically designed to help disabled users
- Meets ZKA regulations
- Polarised lens (combats shoulder surfing)
- Retro fitted in minutes
- Fits almost any ATM cash machine
- Made from highly durable fire retardant shatterproof polycarbonate
- No drilling or physical fixings required
- All components replaceable
- Bead blasted sides to increase opacity and reduce adhesion

## SPECIFICATIONS

Unit size and weight	Width 257mm (10.11in) Height 81mm (3.2in) Depth 121mm (4.69in) Weight 320g (0.7lb)
Unit Packaging size and weight	Width 263mm (10.35in) Length 220mm (8.66in) Height 85mm (3.35in) Weight 0.8kg (1.8lb)
Carton Size and weight (10 off)	Width 450mm (17.72in) Length 273mm (10.75in) Height 425mm (16.73in) Weight 8kg (17.64lb)

## LANGUAGES

Czech, Danish, Dutch, English, Finnish, French, German, Greek, Hungarian, Italian, Japanese, Korean, Maltese, Norwegian, Polish, Portuguese, Russian, Simplified Chinese, Spanish, Swedish, Traditional Chinese and Turkish.

## ACCESSORIES

- Replacement upper plates
- Replacement lower set of plates
- Replacement EVO5 body
- Replacement security screws
- Angle reducing spacers
- Cut out for headphone jack
- Curved spacers for Opteva machines
- Side labels printed to customer's requirements
- Optional extra high security screws

## AUSTRALIAN TECHNOLOGY MANAGEMENT

P.O Box 888 Marrickville 1475 Sydney NSW AUSTRALIA  
 Phone: +61 2 9569 7007  
 Fax: +61 2 8569 0162  
 www.atmgroup.net.au  
 info@atmgroup.net.au

# ACCESSORIES



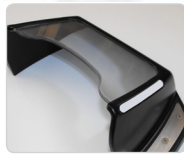
## Angle-reducing spacers

For ATMs with a steep PIN pad angle the optional angle reducing spacers allows the PINGuard to be simply fitted and keeps the ergonomics of the machine.



## Curved spacers for Diebold Opteva® ATM

Curved spacers allows for a simple fit to any ATM with a curved fascia.



## Upgrade your existing PIN Shield to the unique anti camera lens

The unique anti camera lens can be retro fitted to any existing PIN shield. Simply send a sample of you PIN shield and a lens will be manufactured to simple clip on to the existing PIN Shield.



## Replacement components

All components in the range can be order separately.



## Blind fixing system

For extra security a blind fixing system has been designed. The system is simple to fit and is secured from behind the fascia away from the customer.



## High security screw system

All PINGuards are fitted with standard security screws but you can upgrade to extra high security screws. The system has a unique complex key system that cannot be simply duplicated and can only be purchased for the PINGuard system.



## Warning labels

A simple solution in case of an attack, extra high strength labels can be fitted that warn customers if the PINGuard has been tampered with or attacked. Customer specific label can be designed with emergency call numbers, if required.

# PINGuard™

Visit us at [www.atmgroup.net.au](http://www.atmgroup.net.au)

## AUSTRALIAN TECHNOLOGY MANAGEMENT

P.O Box 888 Marrickville 1475  
Sydney NSW AUSTRALIA

[www.atmgroup.net.au](http://www.atmgroup.net.au)

Phone: +61 2 9569 7007

Fax: +61 2 8569 0162

[info@atmgroup.net.au](mailto:info@atmgroup.net.au)

